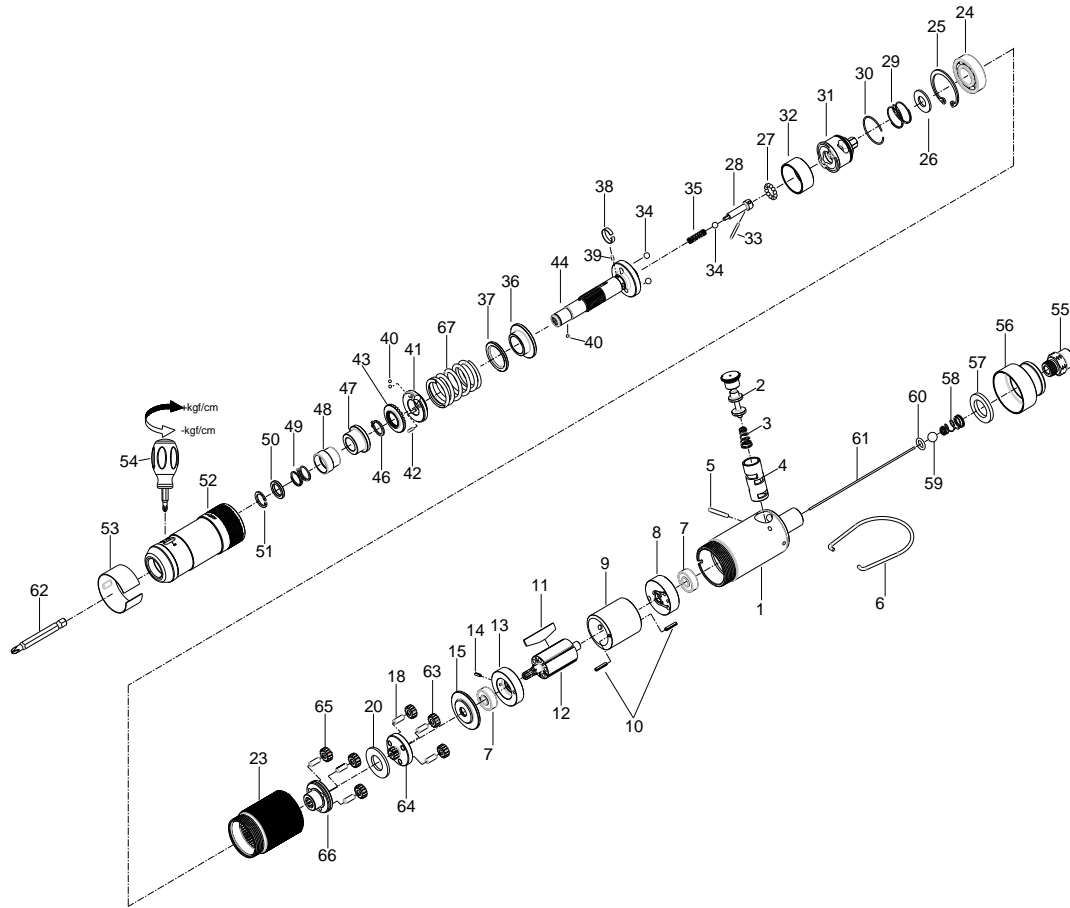


1/4" HEX. SUPER DUTY FULL-AUTO SHUT OFF AIR SCREWDRIVER



35005STWA

INDEX NO.	DESCRIPTION	REQ'D NO.	INDEX NO.	DESCRIPTION	REQ'D NO.
★ 1	Housing Assembly (incl. 4)	1	38	Band	1
2	Reverse Valve	1	39	Pin	1
3	Spring	1	40	Steel Ball	3
● 4	Reverse Valve Bushing	1	41	Adjustment Nut	1
5	Pin	1	42	Pin	1
6	Throttle Valve Plunger	1	43	Adjustment Lock Ring	1
7	Bearing	2	44	Standard Anvil	1
8	Rear End Plate	1	46	Retainer	1
9	Cylinder	1	47	Bushing	1
10	Pin	2	48	Bit Sleeve	1
11	Rotor Blade	5	49	Spring	1
12	Rotor	1	50	Washer	1
13	Front End Plate	1	51	Retainer	1
14	Pin	1	52	Hammer Case	1
15	Spacer	1	53	Adjustment Cover	1
18	Pin	6	54	Screwdriver	1
20	Gear Cage Spacer	1	55	Air Inlet	1
23	Gear Housing	1	56	Exhaust Deflector	1
24	Bearing	1	57	Muffler Element	1
25	Retainer	1	58	Spring	1
26	Washer	1	59	Steel Ball	1
27	Steel Ball	12	60	O-Ring	1
28	Driving Shaft	1	61	Throttle Valve Plunger	1
29	Spring	1	62	Bit (Option)	1
30	Snap Ring	1	63	Planet Gear	3
31	Cam Spindle	1	64	First Gear Cage	1
32	Ball Holder	1	65	Planet Gear	3
33	Pin	1	66	Second Gear Cage	1
34	Steel Ball	3	67	Spring	1
35	Spring	1	TK	Tune-Up Kit { incl. 3.6.7 (2) .11 (5) .24.27 (12) .28.29.31.33.34 (3) .35.38.40.43.49.53.55.56.57.58.59.60.67 }	
36	Cam Ring	1			
37	Washer	1			

★ Must be Purchased in Assembly Set

● Recommended not to be purchased alone due to assembly difficulty