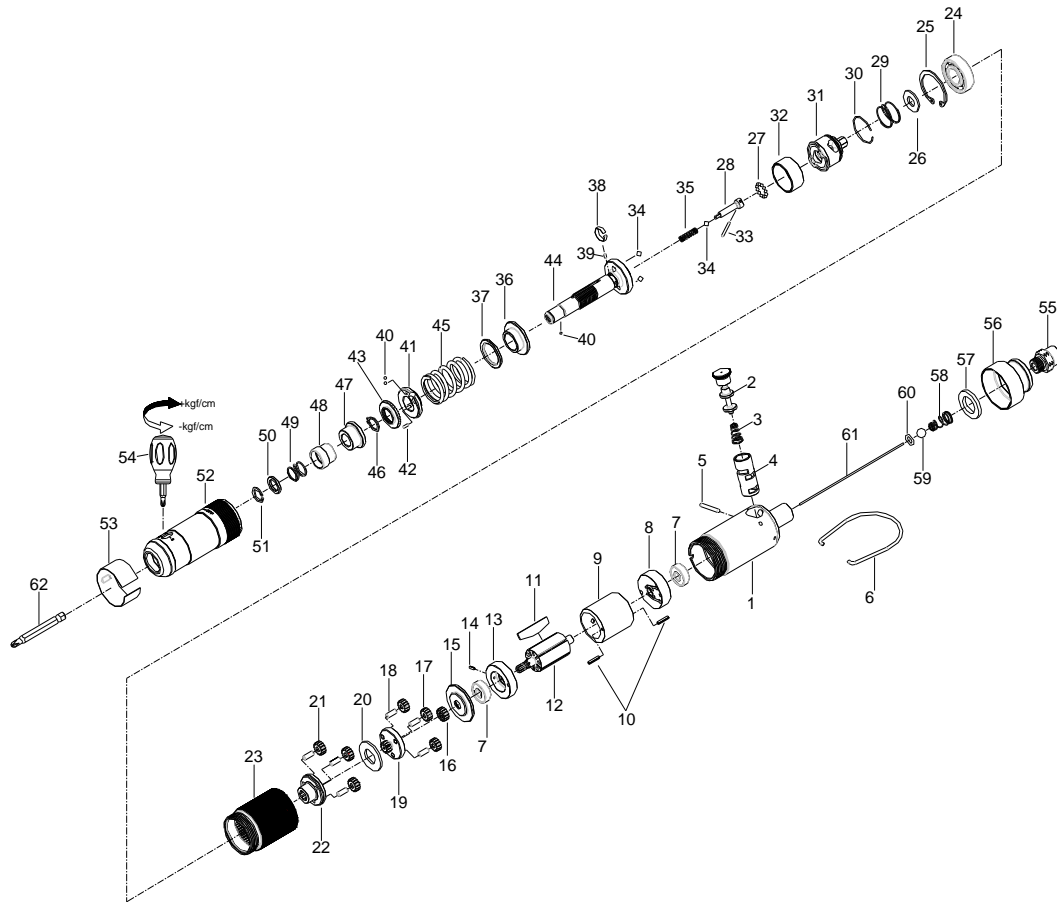


1/4" HEX. SUPER DUTY FULL-AUTO SHUT OFF AIR SCREWDRIVER



35008STWA

INDEX NO.	DESCRIPTION	REQ'D NO.	INDEX NO.	DESCRIPTION	REQ'D NO.
★ 1	Housing Assembly (incl. 4)	1	33	Pin	1
2	Reverse Valve	1	34	Steel Ball	3
3	Spring	1	35	Spring	1
● 4	Reverse Valve Bushing	1	36	Cam Ring	1
5	Pin	1	37	Washer	1
6	Throttle Valve Plunger	1	38	Band	1
7	Bearing	2	39	Pin	1
8	Rear End Plate	1	40	Steel Ball	3
9	Cylinder	1	41	Adjustment Nut	1
10	Pin	2	42	Pin	1
11	Rotor Blade	5	43	Adjustment Lock Ring	1
12	Rotor	1	44	Standard Anvil	1
13	Front End Plate	1	45	Spring	1
14	Pin	1	46	Retainer	1
15	Spacer	1	47	Bushing	1
16	Middle Gear	1	48	Bit Sleeve	1
17	Planet Gear	3	49	Spring	1
18	Pin	6	50	Washer	1
19	First Gear Cage	1	51	Retainer	1
20	Gear Cage Spacer	1	52	Hammer Case	1
21	Planet Gear	3	53	Adjustment Cover	1
22	Second Gear Cage	1	54	Screwdriver	1
23	Gear Housing	1	55	Air Inlet	1
24	Bearing	1	56	Exhaust Deflector	1
25	Retainer	1	57	Muffler Element	1
26	Washer	1	58	Spring	1
27	Steel Ball	12	59	Steel Ball	1
28	Driving Shaft	1	60	O-Ring	1
29	Spring	1	61	Throttle Valve Plunger	1
30	Snap Ring	1	62	Bit (Option)	1
31	Cam Spindle	1	TK	Tune-Up Kit { incl. 3.6.7 (2) .11 (5) .24.27 (12) .28.29 29.31.33.34 (3) .35.38.40.43.45.49.53.55.56.57.58. 59.60 }	
32	Ball Holder	1			

★ Must be Purchased in Assembly Set

● Recommended not to be purchased alone due to assembly difficulty