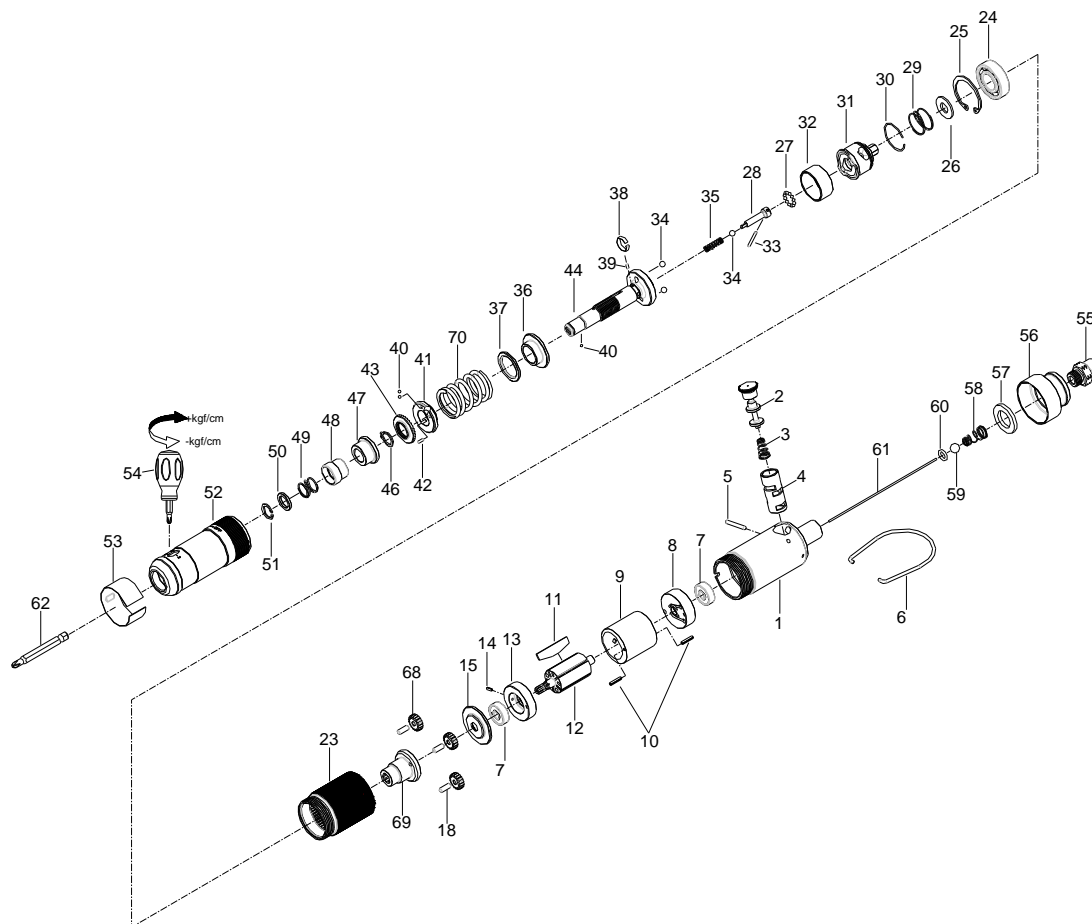


# 1/4" HEX. SUPER DUTY FULL-AUTO SHUT OFF AIR SCREWDRIVER



## 35017STWA

INDEX NO.	DESCRIPTION	REQ'D NO.	INDEX NO.	DESCRIPTION	REQ'D NO.
★ 1	Housing Assembly ( incl. 4 )	1	37	Washer	1
2	Reverse Valve	1	38	Band	1
3	Spring	1	39	Pin	1
● 4	Reverse Valve Bushing	1	40	Steel Ball	3
5	Pin	1	41	Adjustment Nut	1
6	Throttle Valve Plunger	1	42	Pin	1
7	Bearing	2	43	Adjustment Lock Ring	1
8	Rear End Plate	1	44	Standard Anvil	1
9	Cylinder	1	46	Retainer	1
10	Pin	2	47	Hammer Case	1
11	Rotor Blade	5	48	Bit Sleeve	1
12	Rotor	1	49	Spring	1
13	Front End Plate	1	50	Washer	1
14	Pin	1	51	Retainer	1
15	Spacer	1	52	Hammer Case	1
18	Pin	6	53	Adjustment Cover	1
20	Gear Cage Spacer	1	54	Screwdriver	1
23	Gear Housing	1	55	Air Inlet	1
24	Bearing	1	56	Exhaust Deflector	1
25	Retainer	1	57	Muffler Element	1
26	Washer	1	58	Spring	1
27	Steel Ball	12	59	Steel Ball	1
28	Driving Shaft	1	60	O-Ring	1
29	Spring	1	61	Throttle Valve Plunger	1
30	Snap Ring	1	62	Bit ( Option )	1
31	Cam Spindle	1	68	Planet Gear	3
32	Ball Holder	1	69	Spindle	1
33	Pin	1	70	Spring	1
34	Steel Ball	3	TK	Tune-Up Kit { incl. 3.6.7 ( 2 ) .11 ( 5 ) .24.27 ( 12 ) .28. 29.31.33.34 ( 3 ) .35.38.40.43.49.53.55.56.57.58.59. 60.70 }	
35	Spring	1			
36	Cam Ring	1			

★ Must be Purchased in Assembly Set

● Recommended not to be purchased alone due to assembly difficulty