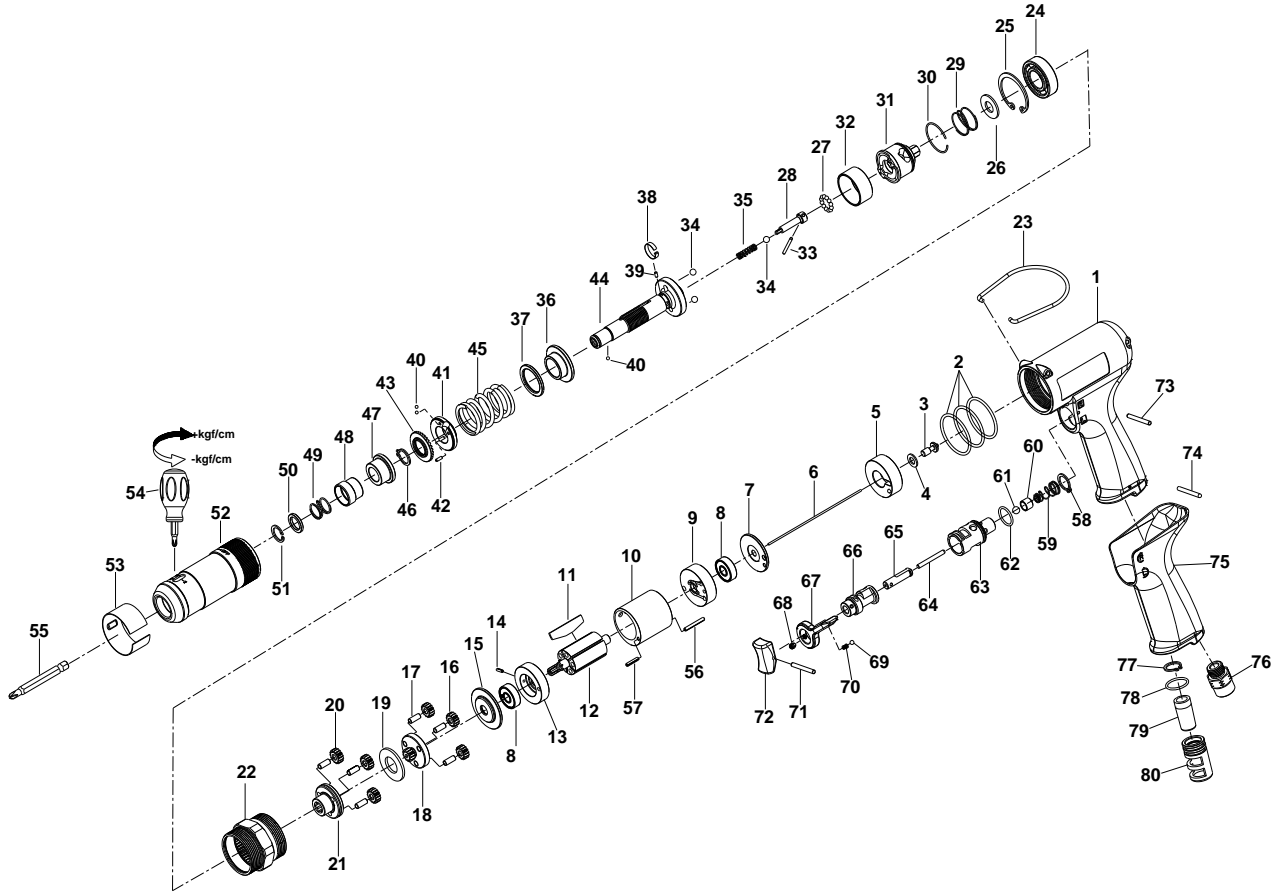


1/4" HEX. SUPER DUTY FULL-AUTO SHUT OFF AIR SCREWDRIVER



35105PLWA

INDEX NO.	DESCRIPTION	REQ'D NO.	INDEX NO.	DESCRIPTION	REQ'D NO.
01	Motor Housing	1	42	Pin	1
02	O-Ring	3	43	Adjustment Nut	1
03	Shut-off Valve	1	44	Standard Anvil	1
04	Washer	1	45	Torque Setting Spring	1
05	Handle Bushing	1	46	Retainer	1
06	Throttle Valve Plunger	1	47	Bushing	1
07	Rear Plate Space	1	48	Release Sleeve	1
08	Ball Bearing	2	49	Spring	1
09	Rear End Plate	1	50	Washer	1
10	Cylinder	1	51	Retainer	1
11	Rotor Blade	5	52	Clutch Housing	1
12	Rotor	1	53	Rubber Ring	1
13	Front End Plate	1	54	Screwdriver	1
14	Spring Pin	1	55	Bit (Option)	
15	Washer	1	56	Spring Pin	1
16	Planet Gear	3	57	Spring Pin	1
17	Pin	6	58	Retainer	1
18	Rear Gear Head	1	59	Throttle Valve Spring	1
19	Washer	1	60	Throttle Valve	1
20	Planet Gear	3	61	Steel Ball	1
21	Front Gear Head	1	62	O-Ring	1
22	Gear Housing	1	63	Bushing	1
23	Hanger	1	64	Pin	1
24	Ball Bearing	1	65	Trigger Pin	1
25	Retainer	1	66	Reverse Valve	1
26	Washer	1	67	Everse Knob	1
27	Steel Ball	12	68	Screw	1
28	Pilot Pin	1	69	Steel Ball	1
29	Spring	1	70	Spring	1
30	Retainer	1	71	Spring Pin	1
31	Rear Clutch	1	72	Trigger	1
32	Ball Holder	1	73	Pin	1
33	Pin	1	74	Pin	1
34	Steel Ball	3	75	Rubber Grip	1
35	Spring	1	76	Air Inlet	1
36	Central Clutch	1	77	Retainer	1
37	Washer	1	78	O-Ring	1
38	Band	1	79	Muffler	1
39	Pin	1	80	Exhaust Deflector	1
40	Steel Ball	3			
41	Adjustment Lock Ring	1	TK	Tune-Up Kit { incl. 2 (3).11 (5).27 (12).29.34 (3).40 (3).45.49.59.61.62.69.70.78 }	

★ Must be Purchased in Assembly Set

● Recommended not to be purchased alone due to assembly difficulty