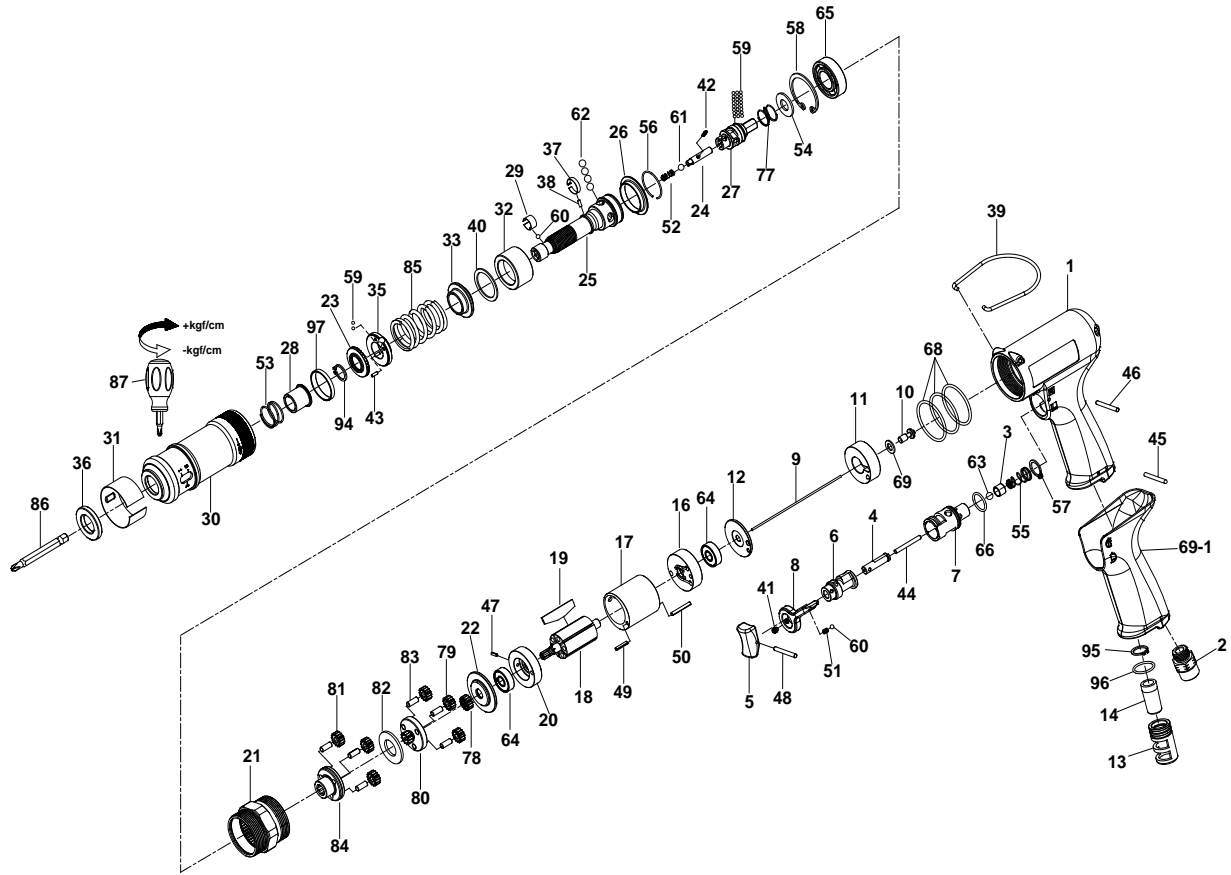


1/4" Hex. SUPER DUTY FULL-AUTO SHUT OFF AIR SCREWDRIVER



35108PLUA

INDEX NO.	DESCRIPTION	REQ'D NO.	INDEX NO.	DESCRIPTION	REQ'D NO.
1	Housing	1	45	Pin	1
2	Air Inlet	1	46	Pin	1
3	Throttle Valve	1	47	Spring Pin	1
4	Trigger Pin	1	48	Spring Pin	1
5	Trigger	1	49	Spring Pin	1
6	Reverse Valve	1	50	Spring Pin	1
7	Reverse Valve Bushing	1	51	Spring	1
8	Reverse Knob	1	52	Spring	1
9	Throttle Valve Plunger	1	53	Spring	1
10	Shut-off Valve	1	54	Gasket	1
11	Handle Bushing	1	55	Spring	1
12	Rear Plate Space	1	56	Retainer	1
13	Exhaust Deflector	1	57	Retainer	1
14	Muffler Element	1	58	Retainer	1
16	Rear End Plate	1	59	Steel Ball	24
17	Cylinder	1	60	Steel Ball	2
18	Rotor	1	61	Steel Ball	1
19	Rotor Blade	5	62	Steel Ball	4
20	Front End Plate	1	63	Steel Ball	1
21	Gear Housing	1	64	Ball Bearing	2
22	Washer	1	65	Ball Bearing	1
23	Adjustment Nut	1	66	O-Ring	1
24	Driving Shaft	1	68	O-Ring	3
25	Standard Anvil	1	69	Washer	1
26	Ball Holder	1	69-1	Rubber Grip	1
27	Cam Spindle	1	77	Spring	1
28	Bushing	1	78	Inner Gear	1
29	Band	1	79	Planet Gear	3
30	Hammer Case	1	80	Work Spinder	1
31	Adjustment Cover	1	81	Planet Gear	3
32	Cam Ring	1	82	Washer	1
33	Spring Collar	1	83	Pin	6
35	Adjustment Lock Ring	1	84	Work Spinder	1
36	Retainer	1	85	Spring	1
37	Band	1	86	Bit (Option)	1
38	Pin	1	87	Screwdriver	1
39	Hanger	1	94	Retainer	1
40	Gasket	1	95	Retainer	1
41	Screw	1	96	O-Ring	1
42	Pin	1	97	Washer	1
43	Pin	1			
44	Pin	1	TK	Tune-Up Kit { incl.19 (5).40.51.52.53.54.55.59 (24).60 (2).61.62 (4).63.66.68 (3).77.85.96 }	

★ Must be Purchased in Assembly Set

● Recommended not to be purchased alone due to asser

20140513R3