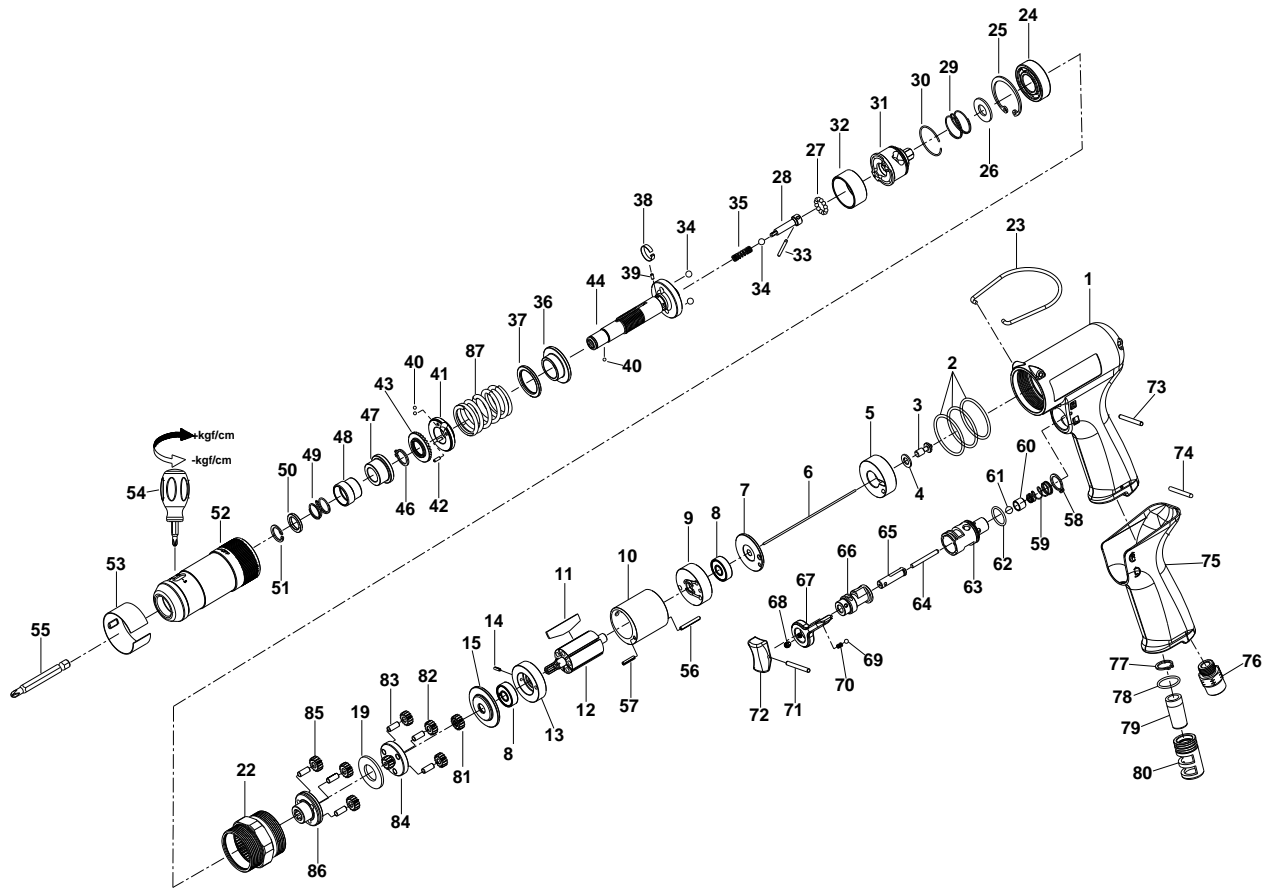


1/4" HEX. SUPER DUTY FULL-AUTO SHUT OFF AIR SCREWDRIVER



35108PLWA

INDEX NO.	DESCRIPTION	REQ'D NO.	INDEX NO.	DESCRIPTION	REQ'D NO.
01	Housing	1	48	Release Sleeve	1
02	O-Ring	3	49	Spring	1
03	Shut-off Valve	1	50	Washer	1
04	Washer	1	51	Retainer	1
05	Handle Bushing	1	52	Clutch Housing	1
06	Throttle Valve Plunger	1	53	Rubber Ring	1
07	Rear Plate Space	1	54	Screwdriver	1
08	Ball Bearing	2	55	Bit (Option)	1
09	Rear End Plate	1	56	Spring Pin	1
10	Cylinder	1	57	Spring Pin	1
11	Rotor Blade	5	58	Retainer	1
12	Rotor	1	59	Throttle Valve Spring	1
13	Front End Plate	1	60	Throttle Valve	1
14	Spring Pin	1	61	Steel Ball	1
15	Washer	1	62	O-Ring	1
19	Washer	1	63	Bushing	1
22	Gear Housing	1	64	Pin	1
23	Hanger	1	65	Trigger Pin	1
24	Ball Bearing	1	66	Reverse Valve	1
25	Retainer	1	67	Reverse Knob	1
26	Washer	1	68	Screw	1
27	Steel Ball	12	69	Steel Ball	1
28	Pilot Pin	1	70	Spring	1
29	Spring	1	71	Spring Pin	1
30	Retainer	1	72	Trigger	1
31	Rear Clutch	1	73	Pin	1
32	Ball Holder	1	74	Pin	1
33	Pin	1	75	Rubber Grip	1
34	Steel Ball	3	76	Air Inlet	1
35	Spring	1	77	Retainer	1
36	Central Clutch	1	78	O-Ring	1
37	Washer	1	79	Muffler	1
38	Band	1	80	Exhaust Deflector	1
39	Pin	1	81	Pinion Gear	1
40	Steel Ball	3	82	Planet Gear	3
41	Adjustment Lock Ring	1	83	Pin	6
42	Pin	1	84	Rear Gear Head	1
43	Adjustment Nut	1	85	Planet Gear	3
44	Standard Anvil	1	86	Front Gear Head	1
46	Retainer	1	87	Spring	1
47	Bushing	1	TK	Tune-Up Kit { incl. 2 (3), 11 (5), 27 (12), 29, 34 (3), 35, 40 (3), 49, 59, 61, 62, 69, 70, 78, 87 }	

★ Must be Purchased in Assembly Set

● Recommended not to be purchased alone due to assembly difficulty

20151103R1