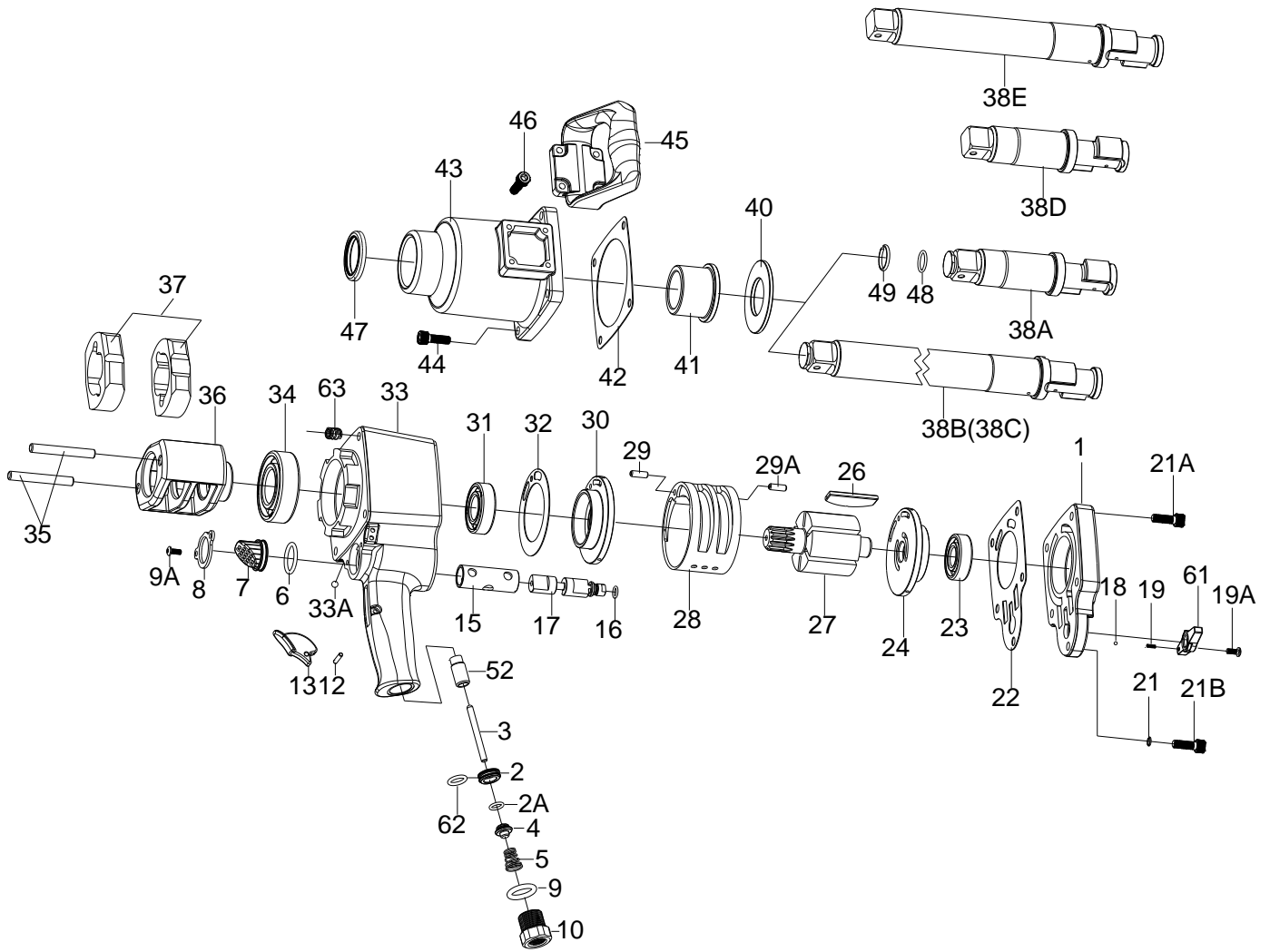


# 1" SQ. DR.SUPER DUTY IMPACT WRENCH



## 38P/38P-6/38P-8

INDEX NO.	DESCRIPTION	REQ'D NO.	INDEX NO.	DESCRIPTION	REQ'D NO.
1	Backhead	1	29A	Spring Pin	1
2	Throttle Valve Seat	1	★ 30	Front End Plate Assembly ( incl.31 )	1
2A	O-Ring	1	● 31	Ball Bearing	1
3	Valve Stem	1	32	Gasket	1
4	Throttle Valve	1	★ 33	Housing Assembly { incl.15.33A ( 4 ) .52. 63 ( 9 ) }	1
5	Spring	1	● 33A	Steel Ball	4
6	O-Ring	1	34	Ball Bearing	1
7	Exhaust Deflector	1	35	Hammer Pin	2
8	Retainer	1	36	Hammer Frame	1
9	O-Ring	1	37	Hammer	2
9A	Screw	2	38A	Standard Anvil ( for KI-38P )	1
10	Air Inlet	1	38B	6" Extended Anvil ( for KI-38P-6 )	1
12	Trigger Pin	1	38C	8" Extended Anvil ( for KI-38P-8 ) ( Option )	1
13	Trigger	1	38D	Standard Anvil ( Option )	1
● 15	Reverse Valve Bushing	1	38E	6" Extended Anvil ( Option )	1
16	O-Ring	1	40	Washer	1
17	Reverse Valve	1	41	Bushing	1
18	Steel Ball	1	42	Gasket	1
19	Spring	1	43	Hammer Case	1
19A	Screw	1	44	Screw	4
● 21	Spring Washer	1	45	Side Spade Handle	1
21A	Screw	4	46	Screw	4
★ 21B	Screw Assembly ( incl.21 )	1	47	Oil seal	1
22	Gasket	1	48	O-Ring ( for 38A.38B.38C )	1
● 23	Ball Bearing	1	49	Socket Retainer ( for 38A.38B.38C )	1
★ 24	Rear End Plate Assembly ( incl.23 )	1	● 52	Bushing	1
26	Rotor Blade	6	61	Reverse Valve Knob	1
27	Rotor	1	62	O-Ring	1
28	Cylinder	1	● 63	Heli-Coil	9
29	Spring Pin	1	TK	Tune-Up Kit { incl.2A.5.6.9.16.18.19.22.23.26 ( 6 ) .31.32.34.42.48.49.62 }	

★ Must be Purchased in Assembly Set

● Recommended not to be purchased alone due to assembly difficulty