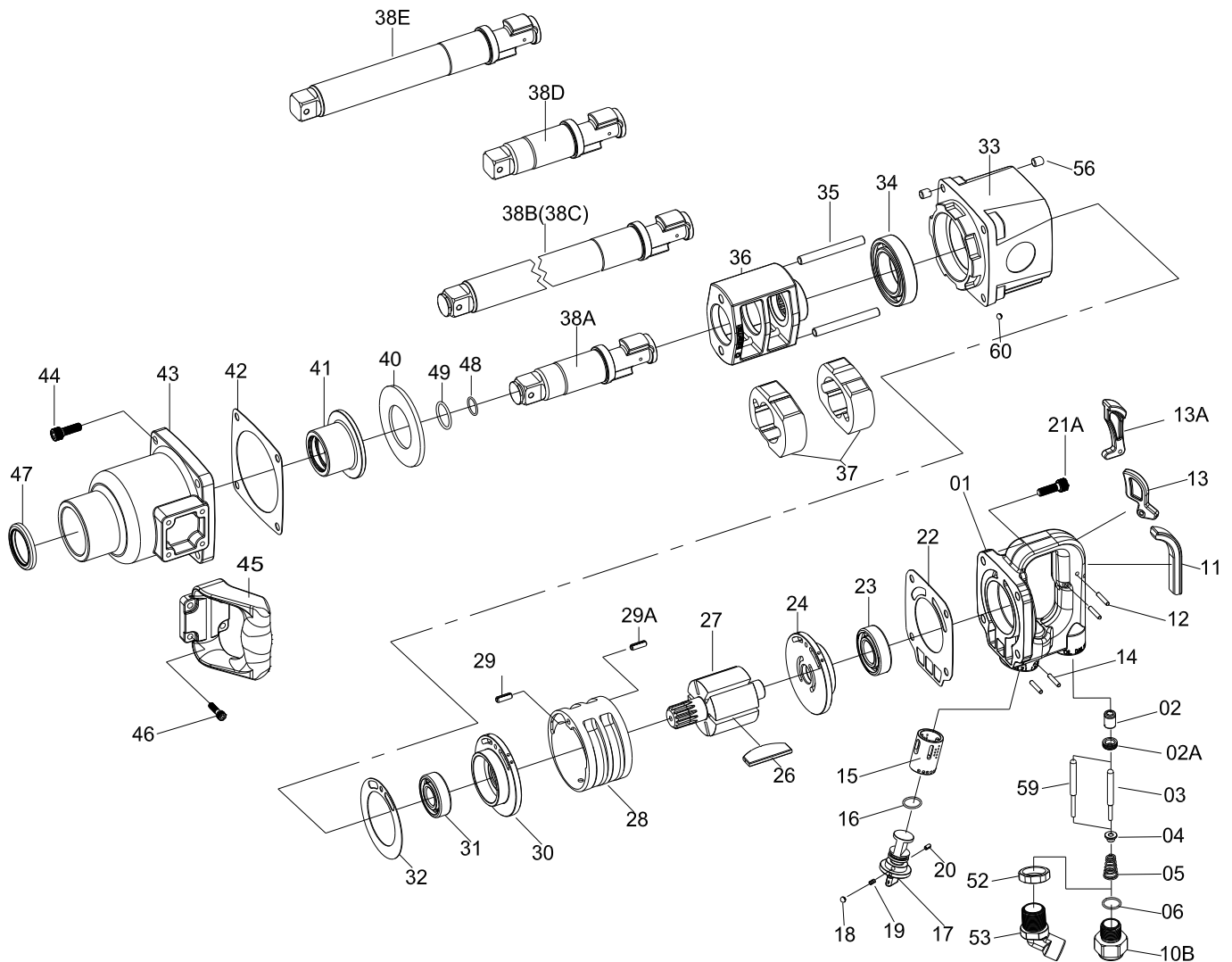


1" SQ. DR. SUPER DUTY IMPACT WRENCH



38/38-6/38-8

INDEX NO.	DESCRIPTION	REQ'D NO.	INDEX NO.	DESCRIPTION	REQ'D NO.
★ 1	Backhead Assembly (incl.2.15)	1	● 31	Ball Bearing	1
● 2	Bushing	1	32	Gasket	1
2A	Throttle Valve Seat	1	★ 33	Housing Assembly { incl.56 (8).60 (4) }	1
3	Valve Stem (for Inside Trigger)	1	34	Ball Bearing	1
4	Throttle Valve	1	35	Hammer Pin	2
5	Spring	1	36	Hammer Frame	1
6	O-Ring	1	37	Hammer	2
10B	Air Inlet (Option)	1	38A	Standard Anvil (Option)	1
11	Rubber Cap (for Inside Trigger)	1	38B	6" Extended Anvil (for KI-38-6)	1
12	Pin	2	38C	8" Extended Anvil (for KI-38-8) (Option)	1
13	Inside Trigger (Option)	1	38D	Standard Anvil (for KI-38)	1
13A	Outside Trigger (Option)	1	38E	6" Extended Anvil (Option)	1
14	Spring Pin	2	40	Washer	1
● 15	Reverse Valve Bushing	1	41	Bushing	1
16	O-Ring	1	42	Gasket	1
★ 17	Reverse Valve Assembly (incl.20)	1	43	Hammer Case	1
18	Steel Ball	1	44	Screw	4
19	Spring	1	45	Side Spade Handle	1
● 20	Spring Pin	1	46	Screw	4
21A	Screw	4	47	Oil Seal	1
22	Gasket	1	48	O-Ring (for 38A.38B.38C)	1
● 23	Ball Bearing	1	49	Socket Retainer (for 38A.38B.38C)	1
★ 24	Rear End Plate Assembly (incl.23)	1	52	Lock Nut (Option)	1
26	Rotor Blade	6	53	Air Inlet (Option)	1
27	Rotor	1	● 56	Heli-Coil	8
28	Cylinder	1	59	Valve Stem (for Outside Trigger)	1
29	Spring Pin	1	● 60	Stell Ball	4
29A	Spring Pin	1			
★ 30	Front End Plate Assembly (incl.31)	1	TK	Tune-Up Kit { incl.5.6.16.18.19.22.23.26 (6).31.32.34.42.48.49 }	

★ Must be Purchased in Assembly Set

● Recommended not to be purchased alone due to assembly difficulty