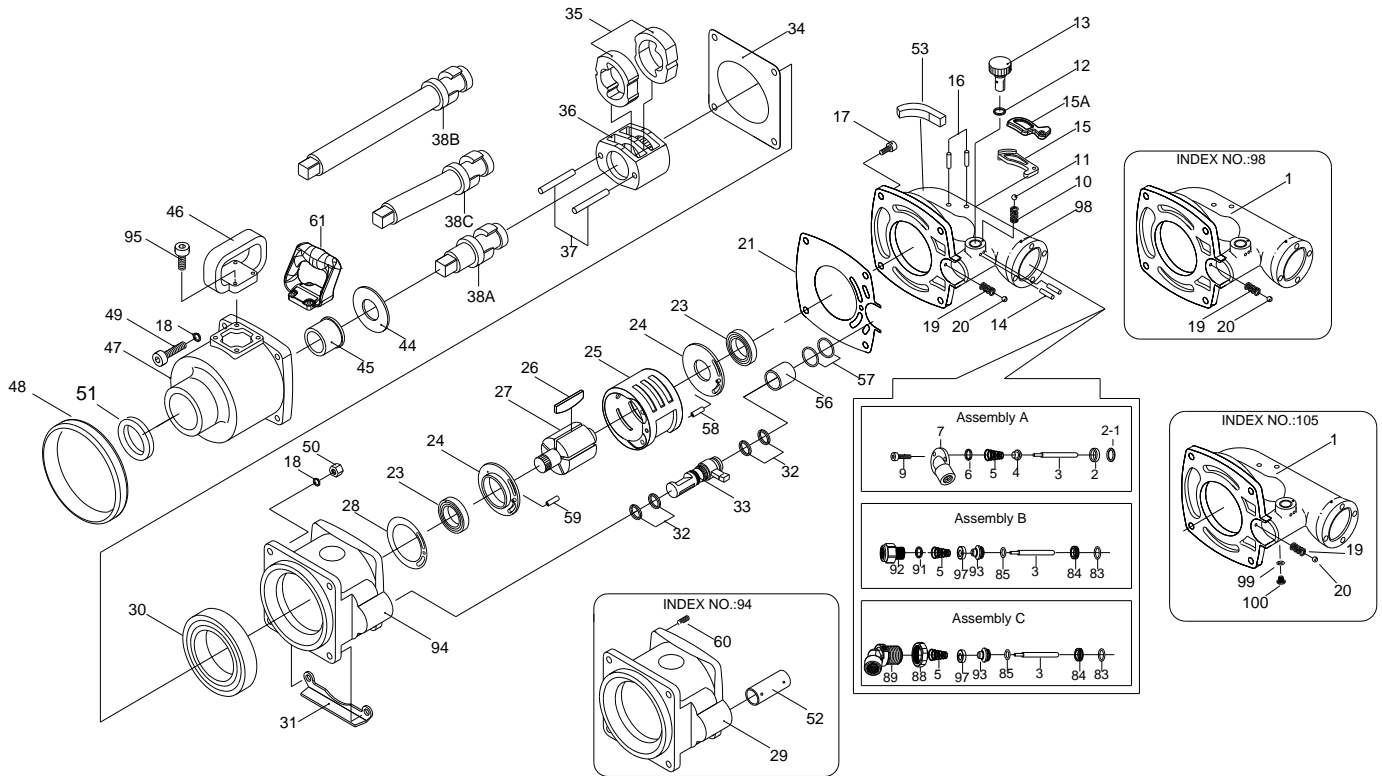


1" SQ. DR. SUPER DUTY IMPACT WRENCH



45/45-6/45-8

| INDEX NO. | DESCRIPTION | REQ'D NO. | INDEX NO. | DESCRIPTION | REQ'D NO. |
|-----------|---|-----------|-----------|--|-----------|
| ● 1 | Backhead | 1 | 37 | Hammer Pin | 2 |
| ● 2 | Throttle Valve Seat | 1 | 38A | Standard Anvil (for KI-45) | 1 |
| ● 2-1 | Throttle Valve Washer | 1 | 38B | 8" Extended Anvil (for KI-45-8) | 1 |
| ● 3 | Valve Stem | 1 | 38C | 6" Extended Anvil (for KI-45-6) | 1 |
| ● 4 | Throttle Valve | 1 | 44 | Washer | 1 |
| ● 5 | Spring | 1 | 45 | Bushing | 1 |
| ● 6 | O-Ring | 1 | 46 | Side Spade Handle (Option) | 1 |
| ★ 7 | Air Inlet Assembly (incl.2.2-1.3.4.5.6.9) (Option) | 1 | 47 | Hammer Case | 1 |
| ● 9 | Screw | 4 | 48 | Shield Housing Nose (Option) | 1 |
| 10 | Spring | 1 | ★ 49 | Screw Assembly { incl.18 (4) } | 4 |
| 11 | Steel Ball | 1 | 50 | Lock Nut | 4 |
| 12 | O-Ring | 1 | 51 | Oil Seal | 1 |
| 13 | Air Regulator | 1 | ● 52 | Reverse Valve Bushing | 1 |
| 14 | Spring Pin | 2 | 53 | Rubber Cap (for Inside Trigger) | 1 |
| 15 | Outside Trigger (Option) | 1 | 56 | Bushing | 1 |
| 15A | Inside Trigger (Option) | 1 | 57 | O-Ring | 2 |
| 16 | Spring Pin | 2 | 58 | Spring Pin | 1 |
| 17 | Screw | 4 | 59 | Spring Pin | 1 |
| ● 18 | Spring Washer | 6 | ● 60 | Heli-Coil | 4 |
| ● 19 | Spring | 1 | ● 61 | Side Spade Handle (Option) | 1 |
| ● 20 | Steel Ball | 1 | ● 83 | O-Ring | 1 |
| 21 | Gasket | 1 | ● 84 | Throttle Valve Seat | 1 |
| ● 23 | Ball Bearing | 2 | ● 85 | O-Ring | 1 |
| ★ 24 | Rear End Plate And Front End Plate Assembly (incl.23) | 2 | ● 88 | Angle Air Inlet Nut | 1 |
| 25 | Cylinder | 1 | ★ 89 | Angle Air Inlet Assembly (incl.3.5.83.84.85.88.93.97) (Option) | 1 |
| 26 | Rotor Blade | 7 | ● 91 | O-Ring | 1 |
| 27 | Rotor | 1 | ★ 92 | Air Inlet Assembly (incl.3.5.83.84.91.93.97) (Option) | 1 |
| 28 | Gasket | 1 | ● 93 | Throttle Valve | 1 |
| ● 29 | Motor Housing | 1 | ★ 94 | Housing Assembly { incl.29.52.60(8) } | 1 |
| 30 | Ball Bearing | 1 | 95 | Screw | 4 |
| 31 | Motor Housing Protector | 1 | ● 97 | Valve Ring | 1 |
| 32 | O-Ring | 4 | ★ 98 | Backhead Assembly (incl.1.19.20) (Option) | 1 |
| 33 | Reverse Valve | 1 | ● 99 | O-Ring | 1 |
| 34 | Gasket | 1 | ● 100 | Screw | 4 |
| 35 | Hammer | 2 | ★ 105 | Backhead Assembly (incl.1.19.20.99.100) (Option) | 1 |
| 36 | Hammer Frame | 1 | TK | Tune-Up Kit { 5.6.10.11.12.19.20.21.23(2).26(7).28.30.32(4).34.57(2) } | |

★ Must be Purchased in Assembly Set

● Recommended not to be purchased alone due to assembly difficulty