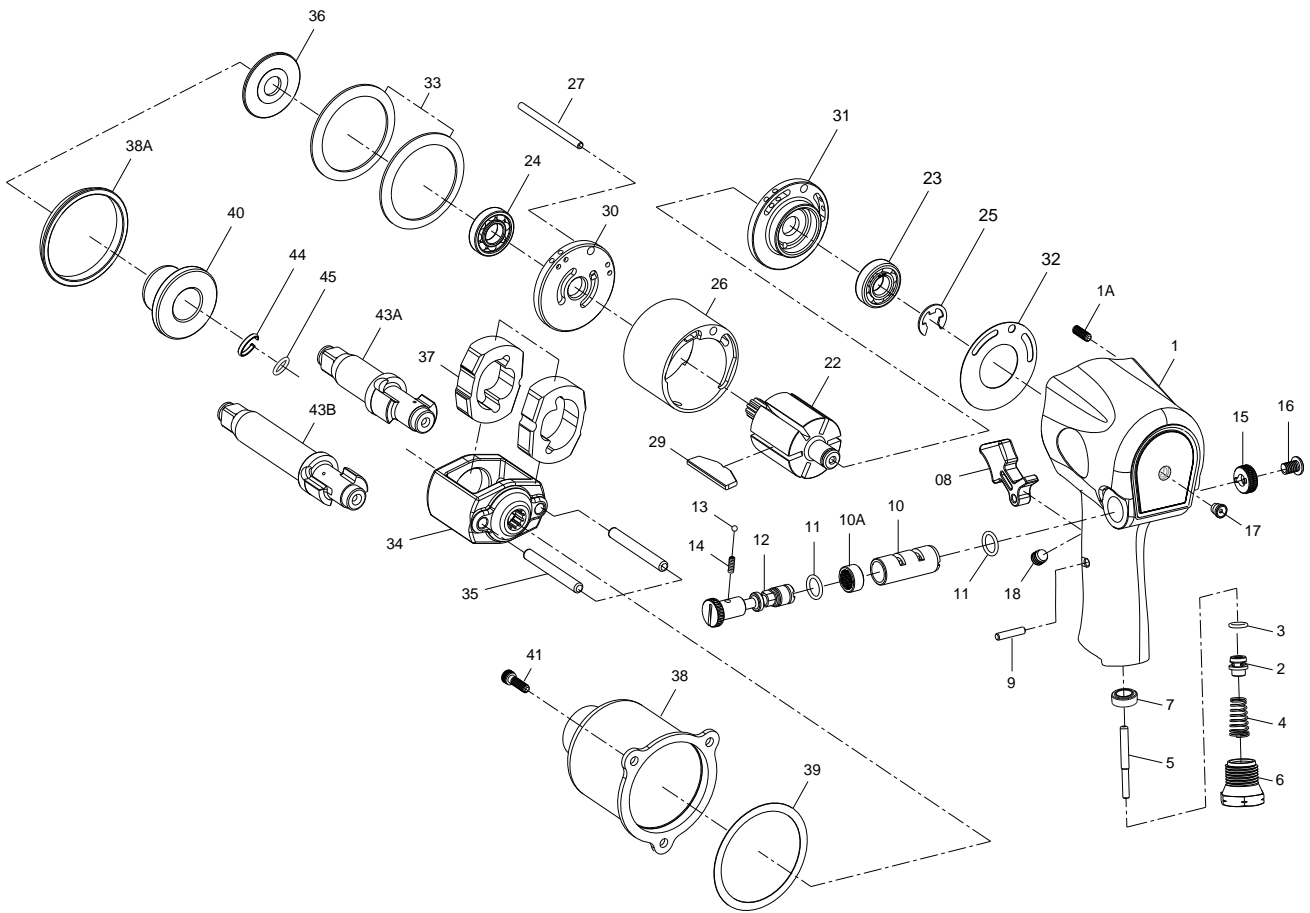


# 1/2" SQ. DR. SUPER DUTY IMPACT WRENCH



## 858/858-2

| INDEX NO. | DESCRIPTION                                  | REQ'D NO. | INDEX NO. | DESCRIPTION   | REQ'D NO. |
|-----------|--|-----------|-----------|---|-----------|
| ★ 1       | Housing Assembly { inc 1.1A.7.10.10A.17.18 } | 1         | 25        | Retainer  | 1         |
| ● 1A      | Heli-Coil                                    | 3         | 26        | Cylinder  | 1         |
| 2         | Throttle Valve                               | 1         | 27        | Cylinder Dowel  | 1         |
| 3         | O-Ring                                       | 1         | 29        | Rotor Blade   | 6         |
| 4         | Spring                                       | 1         | 30        | Front End Plate   | 1         |
| 5         | Throttle Valve Plunger                       | 1         | 31        | Rear End Plate  | 1         |
| 6         | Air Inlet                                    | 1         | 32        | Gasket  | 1         |
| ● 7       | Throttle Valve Seat                          | 1         | 33        | Motor Clamp Washer  | 2         |
| 8         | Trigger                                      | 1         | 34        | Hammer Frame  | 1         |
| 9         | Trigger Pin                                  | 1         | 35        | Hammer Pin  | 2         |
| ● 10      | Reverse Valve Bushing                        | 1         | 36        | Washer  | 1         |
| ● 10A     | Reverse Valve Bushing Gear                   | 1         | 37        | Hammer  | 2         |
| 11        | O-Ring                                       | 2         | 38        | Hammer Case   | 1         |
| 12        | Reverse Valve                                | 1         | 38A       | Separator   | 1         |
| 13        | Steel Ball                                   | 1         | 39        | Gasket  | 1         |
| 14        | Spring                                       | 1         | 40        | Bushing   | 1         |
| 15        | Reverse Valve Knob                           | 1         | 41        | Screw   | 3         |
| 16        | Screw  | 1         | 43A       | Standard Anvil ( for KI-858 )                             | 1         |
| ● 17      | Grease Fitting                               | 1         | 43B       | 2" Extended Anvil ( for KI-858-2 )                        | 1         |
| ● 18      | Set Screw                                    | 1         | 44        | Socket Retainer   | 1         |
| 22        | Rotor  | 1         | 45        | O-Ring  | 1         |
| 23        | Ball Bearing                                 | 1         |           |   |           |
| 24        | Ball Bearing                                 | 1         | TK        | Tune-Up Kit {3.4.11(2).13.14.23.24.25.29(6).32.39.44.45 } |           |

★ Must be Purchased in Assembly Set

● Recommended not to be purchased alone due to assembly difficul

PA2-00858-2

20090409R1