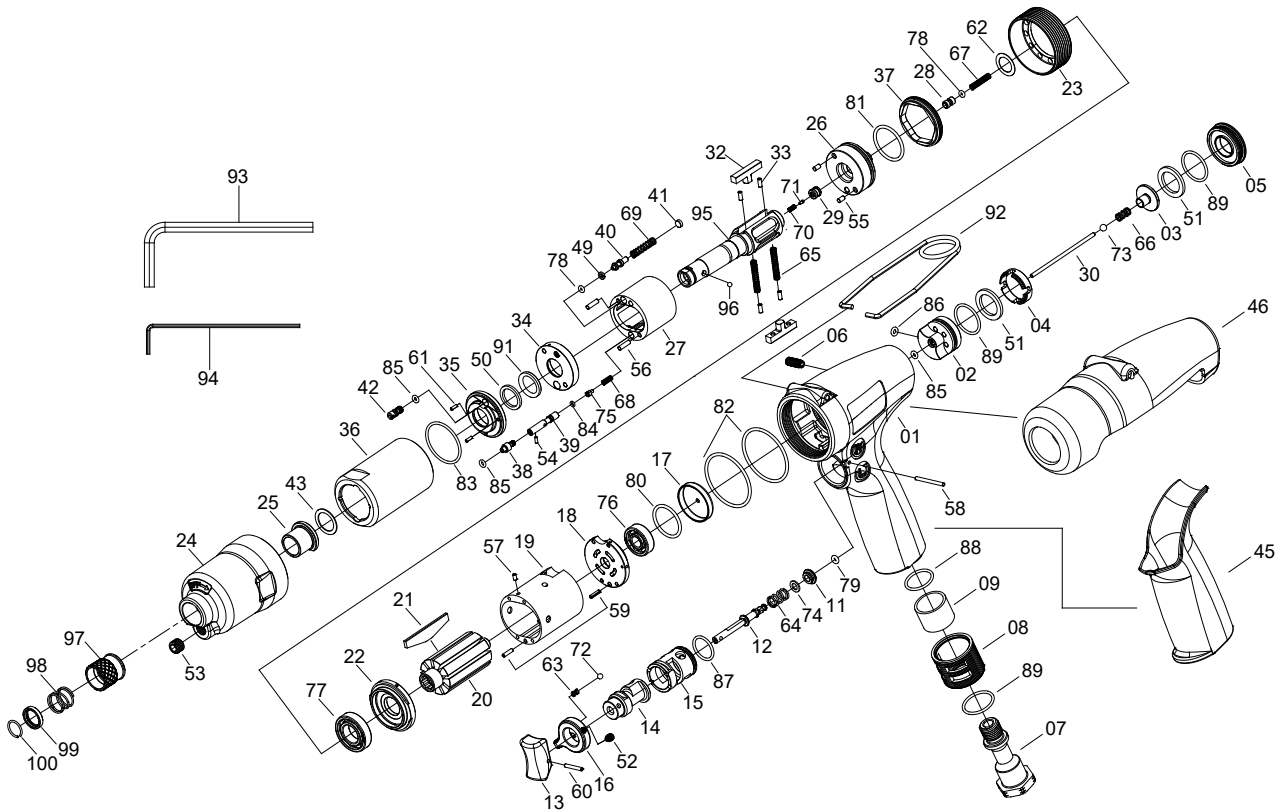


1/4" HEX. OIL-PULSE TOOL



9160P-QC

INDEX NO.	DESCRIPTION	REQ'D NO.	INDEX NO.	DESCRIPTION	REQ'D NO.
1	Motor Housing	1	53	Screw	1
2	Handle Bushing	1	54	Pin	1
3	Shut-off Valve	1	55	Pin	2
4	Washer	1	56	Pin	2
5	Motor Housing Cover	1	57	Pin	1
6	Screw	1	58	Pin	1
7	Air Inlet	1	59	Pin	2
8	Exhaust Deflector	1	60	Pin	1
9	Muffler Element	1	61	Pin	2
11	Throttle Valve	1	62	Spacer	1
12	Valve Stem	1	63	Spring	1
13	Trigger	1	64	Spring	1
14	Reverse Valve	1	65	Spring	2
15	Bushing	1	66	Spring	1
16	Everse Knob	1	67	Spring	1
17	Bearing Washer	1	68	Spring	1
18	Rear End Plate	1	69	Spring	1
19	Cylinder	1	70	Spring	1
20	Rotor	1	71	Choke Valve	1
21	Rotor Blade	9	72	Steel Ball	1
22	Front End Plate	1	73	Steel Ball	1
23	Separator	1	74	Washer	1
24	Clutch Housing	1	75	Pressure Regulator Valve	1
25	Bushing	1	76	Ball Bearing	1
26	Plate	1	77	Ball Bearing	1
27	Hydraulic Cylinder	1	78	O-Ring	2
28	Piston	1	79	O-Ring	1
29	Check Valve Cover	1	80	O-Ring	1
30	Throttle Valve Plunger	1	81	O-Ring	1
★ 32	Driving Blade Assembly { incl.33 (2) }	2	82	O-Ring	2
● 33	Pin	4	83	O-Ring	1
34	Bushing Spacer	1	84	O-Ring	1
35	Front Liner Plate	1	85	O-Ring	3
36	Liner Casing	1	86	O-Ring	1
37	Lock Nut	1	87	O-Ring	1
38	Screw	1	88	O-Ring	1
39	Governor Valve	1	89	O-Ring	3
40	Piston	1	91	D-Ring	1
41	Piston Cover	1	92	Hanger	1
42	Screw	1	93	Hexagon Wrench	1
43	Washer	1	94	Hexagon Wrench	1
45	Rubber Grip	1	95	QC Spindle	1
46	Rubber Ring	1	96	Ball	1
49	Retainer	1	97	Ball Stopper	1
50	Washer	1	98	Ball Stopper Spring	1
51	Washer	2	99	Spring Stopper	1
52	Screw	1	100	Retainer Ring	1

★ Must be Purchased in Assembly Set

● Recommended not to be purchased alone due to assembly difficulty

20190329R2