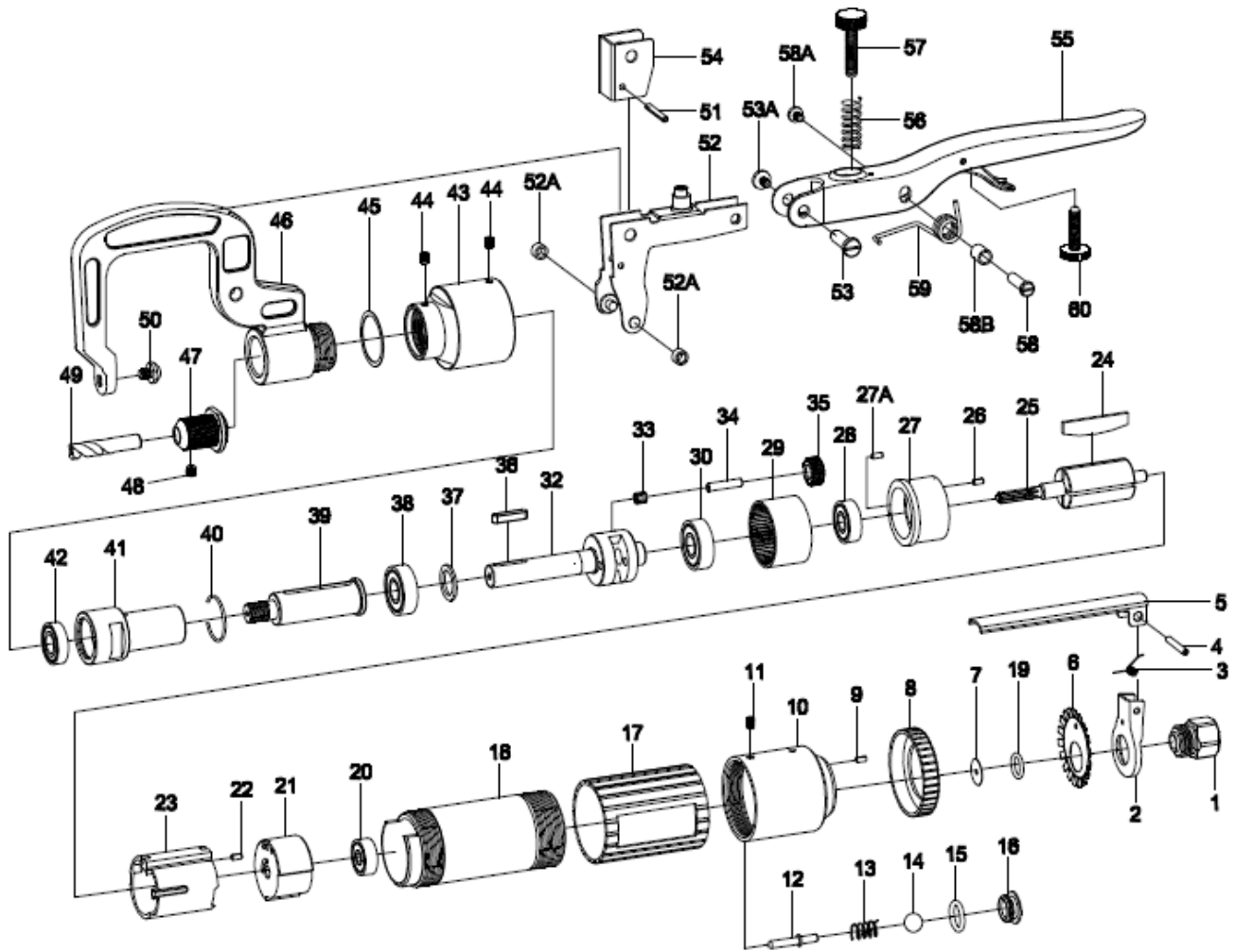


# HEAVY DUTY AIR SPOT DRILL



5002

INDEX NO.	DESCRIPTION	REQ'D NO.	INDEX NO.	DESCRIPTION	REQ'D NO.
01	Inlet Bushing	1	33	Needle Roller	2
02	Batten-Ji Fixed Pian	1	34	Pin	2
03	Spring	1	35	Idler Gear	2
04	Spring Pin	1	36	Sunk Key	1
05	Throttle Lever	1	37	Washer	1
06	Washer	1	38	Ball Bearing	1
07	Gasket	1	39	Spindle Shaft	1
08	Air Pressure Fixed Pian	1	40	Stop Ring	1
09	Spring Pin	1	41	Bush	1
10	Valve Body	1	42	Ball Bearing	1
11	Set Screw	1	43	Clamp Nut	1
12	Valve Stem	1	44	Set Screw	2
13	Valve Spring	1	45	Washer	1
14	Ball	1	46	Arm	1
15	O-Ring	1	47	Spindle	1
16	Valve Screw	1	48	Set Screw	1
17	Plastic Wrapp	1	49	Drill(6.5mm)	1
18	Motor Body	1	50	Cut In Adjusting Bolt	1
19	O-Ring	1	51	Spring Pin	1
20	Ball Bearing	1	52	Arm Base	1
21	Rear End Plate	1	52A	Bushing	2
22	Spring Pin	1	53	Stud	1
23	Cylinder	1	53A	Bolt	1
24	Rotor Blade	4	54	Batten-Ji Fixed Pian	1
25	Rotor	1	55	Grip Handle	1
26	Spring Pin	1	56	Spring	1
27	Front End Plate	1	57	Adjusting Screw	1
27A	Spring Pin	1	58	Screw	1
28	Ball Bearing	1	58A	Bolt	1
29	Internal Gear	1	58B	Collar	1
30	Ball Bearing	1	59	Spring	1
32	Work Spindle	1	60	Adjusting Screw	1

