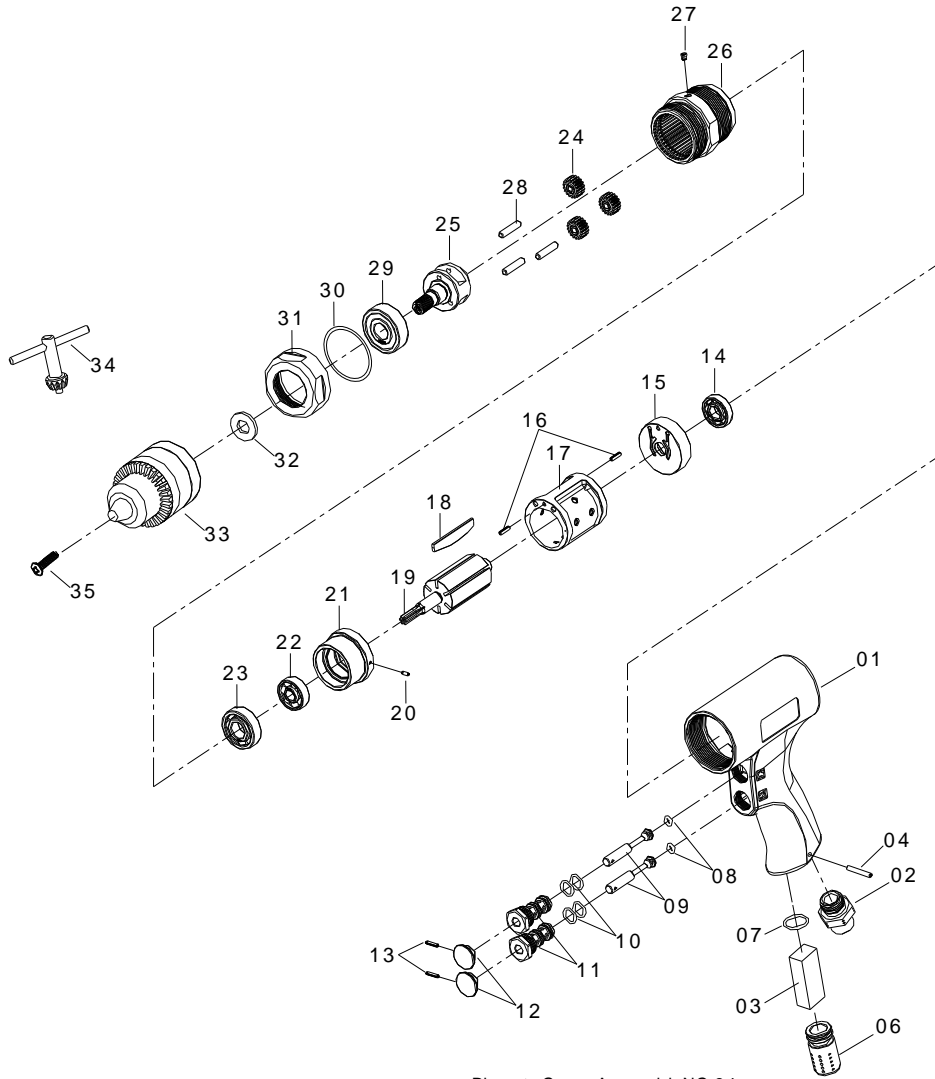
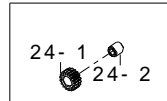


3/8" SUPER DUTY REVERSIBLE AIR DRILL



Planet Gear Assembly NO:24



5336

INDEX NO.	DESCRIPTION	REQ'D NO.	INDEX NO.	DESCRIPTION	REQ'D NO.
1	Motor Housing	1	21	Front End Plate	1
2	Air Inlet	1	22	Ball Bearing	1
3	Exhaust Element	1	23	Ball Bearing	1
4	Spring pin	1	★ 24	Planet Gear Assembly (incl.24-1(3),24-2(3))	3
6	Exhaust Deflector	1	● 24-1	Planet Gear	3
7	O-Ring	1	● 24-2	Bushing	3
8	O-Ring	2	25	Work Spinder	1
9	Throttle Valve Plunger	2	★ 26	Gear Housing Assembly { incl. 27}	1
10	O-Ring	4	● 27	Grease Fitting	1
11	Valve Bushing	2	28	Pin	3
12	Trigger	2	29	Ball Bearing	1
13	Spring pin	2	30	O-Ring	1
14	Ball Bearing	1	31	End Cap	1
15	Rear End Plate	1	32	Washer	1
16	Spring pin	2	★ 33	Chuck Assembly { incl. 34}	1
17	Cylinder	1	● 34	Chuck Key	1
18	Rotor Blade	6	35	Screw	1
19	Rotor	1			
20	Spring pin	1	TK	Tune-Up Kit { 3.7.8 (2).10 (4).14.18 (6).22.23.30 }	

★ Must be Purchased in Assembly Set

● Recommended not to be purchased alone due to assembly difficulty