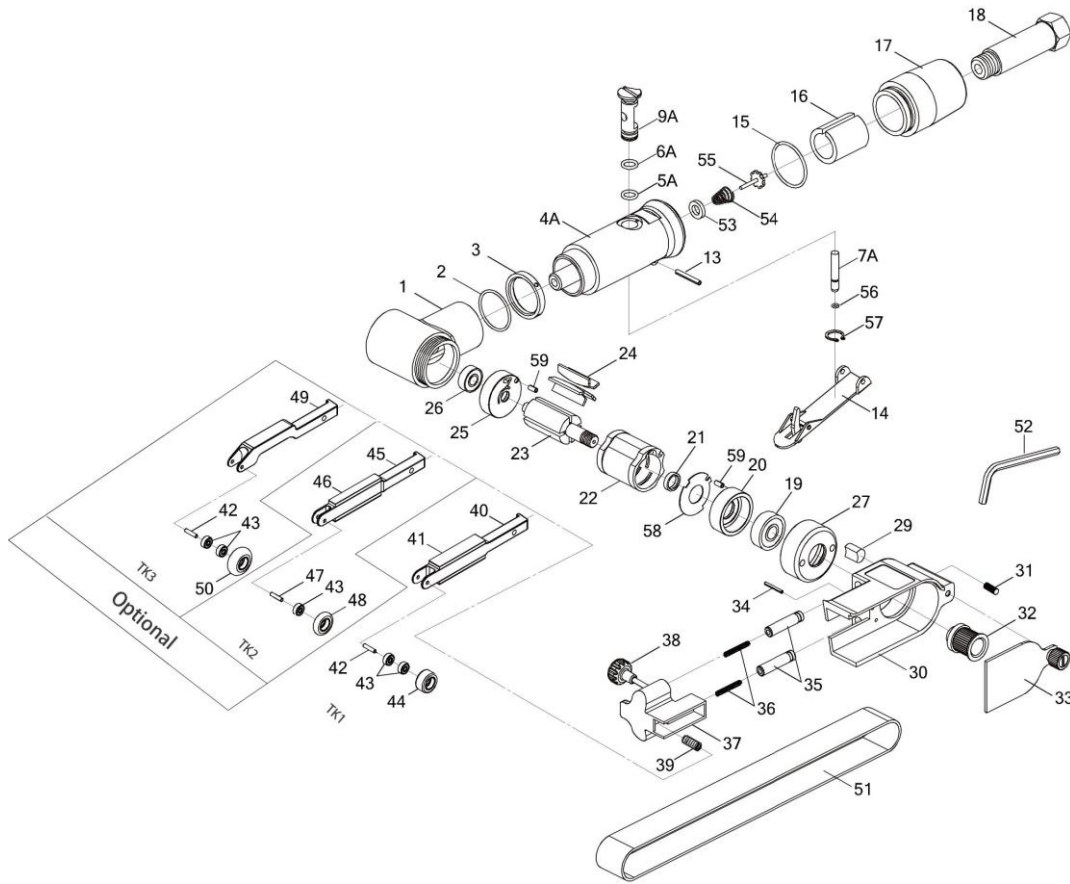


HEAVY DUTY AIR BELT SANDER



6414

INDEX NO.	DESCRIPTION	REQ'D NO.	INDEX NO.	DESCRIPTION	REQ'D NO.
01	Housing	1	36	Spring	2
02	O-Ring	1	37	Tension Arm	1
03	Lock Nut	1	38	Knob	1
04A	Housing	1	39	Spring	1
05A	O-Ring	1	40	Contact Arm (10mm×330mm)	1
06A	O-Ring	1	41	Platen Pad	1
07A	Valve Stem	1	42	Pin	1
09A	Air Controller	1	43	Bearing	2
13	Spring Pin	1	44	Idler Pulley (10mm)	1
14	Throttle Lever	1	43	Bearing (Optional)	1
15	O-Ring	1	45	Contact Arm (6mm×330mm) (Optional)	1
16	Muffler	1	46	Platen Pad (Optional)	1
17	Air Deflector	1	47	Pin (Optional)	1
18	Air Inlet	1	48	Idler Pulley (6mm) (Optional)	1
19	Bearing	1	42	Pin (Optional)	1
20	Front Plate	1	43	Bearing (Optional)	2
21	Spacer	1	49	Contact Arm (10mm×330mm) (Optional)	1
22	Cylinder	1	50	Idler Pulley (10mm) (Optional)	1
23	Rotor	1	51	Sander Belt (10mm×330mm)#100	1
24	Rotor Blade	5	52	Hex. Key Wrench (4mm)	1
25	Rear Plate	1	53	Seal	1
26	Bearing	1	54	Spring	1
27	Cover	1	55	Valve Stem	1
29	Washer	1	56	O-Ring	1
30	Guard Body	1	57	Snap Ring	1
31	Set Screw	1	58	Steel Plate	1
32	Pulley	1	59	Pin	2
33	Guard	1	TK1	40,41,42,43×2,44 (Optional)	1set
34	Spring Pin	1	TK2	43,45,46,47,48 (Optional)	1set
35	Pin	2	TK3	42,43×2,49,50 (Optional)	1set

0000.00.00

2013.06.10 2015.03.05